

Thoroughbred® Release Notes v8.8.2

Appendix

VIP Product Suite, Remote Desktop Services Instructions

To run in Remote Desktop Services mode, the common configuration must be changed. Edit the tbred.ini file:

C:\ProgramData\Thoroughbred Software\tbred.ini

... and then disable the common configuration by setting the common configuration to no:

```
[GENERAL]
commonconfig=no
```

With Remote Desktop Services (RDS) mode enabled, each user on the system will have their own environment which includes a data directory and tbred.ini file. The user's data directory will be located in the following directory:

C:\Users\%USERNAME%\AppData\Roaming\Thoroughbred Software\TSI

The user's tbred.ini file will be located in the following location:

C:\Users\%USERNAME%\AppData\Roaming\Thoroughbred Software\tbred.ini

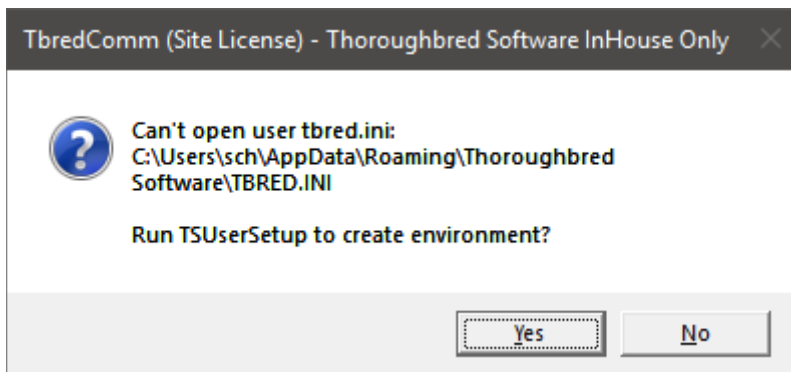
Files and directories that can be shared by all users on the system are located in the system data directory:

C:\ProgramData\Thoroughbred Software\TSI

When running in RDS (Remote Desktop Services) mode, some of the VIP Suite executables will determine if the user's environment has been created. The following executables will check for a user's environment:

- Report Server (Rps.exe)
- TbredComm Key Generation (TBKeyGen.exe)
- TbredComm Communication Server (TbredCom.exe)
- Thoroughbred SSH Tunneling (TbredTunnel.exe)
- Thoroughbred GUI Server (VIP4.exe)

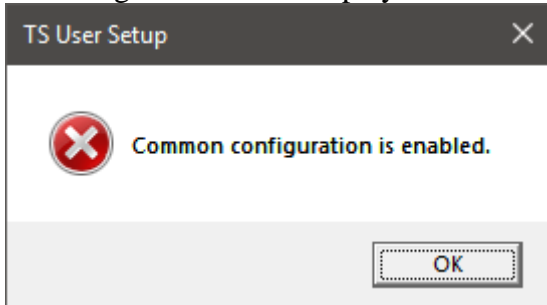
When one of the above detects that the user's environment has not been created, a warning message will be displayed with the option to create the user's environment. For example, running TbredComm where the user's environment has not been created will display the following dialog:



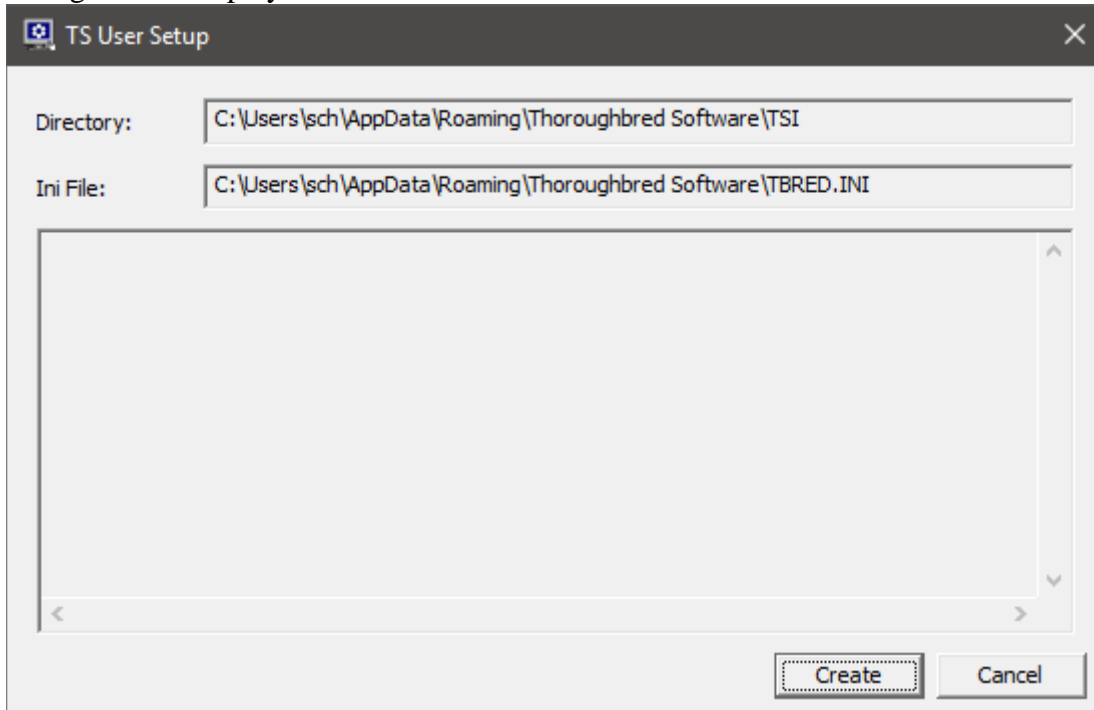
If yes is selected, the TS User Setup executable will be run to create the user's environment.

If no is selected, it will exit.

If the TS User Setup executable is run when the system is not in RDS mode, the following error will be displayed:



If the TS User Setup executable is run when the system is in RDS mode, the following dialog will be displayed to create the user's environment:



The user's data directory is created using the directories from the system data directory and will include the following:

- Bin
- Downloads
- Keys
- MessagePool
- ObjectCache
- Reports
- Scripts
- Temp

The contents of the following directories will be copied from the system data directory to the user's data directory:

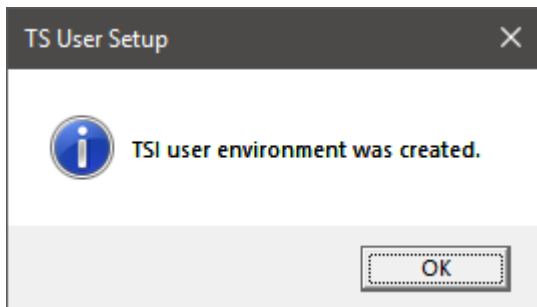
- MessagePool
- ObjectCache
- Scripts

The user's tbred.ini file is created using the contents of the tbred.ini in the system directory. Some or all of the following sections of the tbred.ini file are copied into the user's tbred.ini file:

- GENERAL
- SERVERS
- TWMGR
- TOOLBARCFG
- TBC
- MOUSE
- SETMENU
- SETMSG
- VIP4
- SCREENS
- GSEOPS

If one of the sections listed above does not exist in the system tbred.ini file, it will not be created in the user's tbred.ini file.

When TS User Setup is finished, it will display the following:



To create an AutoLogon that will be copied into a user's environment, it must first be created when the system is not in RDS mode (i.e. common configuration is set to yes). Also, it's 3 character key must be in the format of "US#", where # is 0 though 9. This will allow for up to 10 AutoLogons to be created.